



# POSTA ZIRM HOTEL



## FAMILY SUITE

Posta Zirm Hotel - Col Alt 95 - I 39033 Corvara in Badia - [www.postazirm.com](http://www.postazirm.com) / [info@postazirm.com](mailto:info@postazirm.com)



The Posta Zirm Hotel is conveniently situated in the centre of Corvara and right next door to the Col Alt ski-lift. Our new Family Suite is located in a connected structure and faces the bustling little main square of the village.

This luxurious suite was built back in 1978 inspired by Trenker & Holzmeister architecture and was completely remodelled in 2018. While the building extends on three floors, the suite extends on the two upper floors on generous 155 sq m. It is connected with the Hotel, the SPA, the ski room, the lobby, the bar “La Glisse” and the two hotel restaurants. Facing South-East, the views over the Boe, Cir and the Gardena Pass are charming and you can soak up the sun from late morning to sunset.

# family suite

## YOUR PERFECT STAY?

**This very spacious** suite is the perfect solution for many different needs: couple holidaying with friend couple, two families with children enjoying spending lots of time together while still having their own privacy or a small group of friends wishing to enjoy private entertaining spaces. Here are our solutions.

### **Solution 1: Two families:**

2 parents (individual room) with 1-3 children (shared room)

2 parents (individual room) with 1-3 children (shared room)

### **Solution 2: Friend couples / 2 - 3**

2 friend couples who enjoy sharing entertaining spaces while having the privacy of their own rooms. A third couple is welcome to stay in the enchanted children's room.

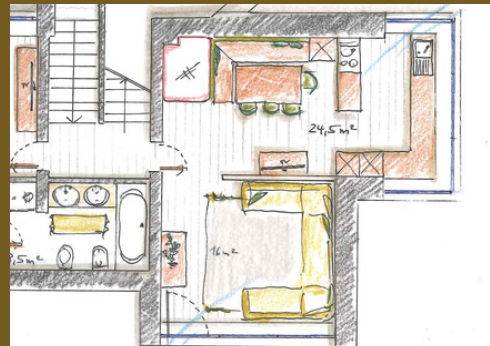
### **Solution 3: Small work groups**

Like in solution 2, the suite can accommodate up to 6 adults that can enjoy the common spaces like the living room, lounge and kitchen for work sessions or happy evenings in the intimacy of their own suite.

# family suite

## SPACIOUS LIVING AREA, KITCHEN SECOND FLOOR

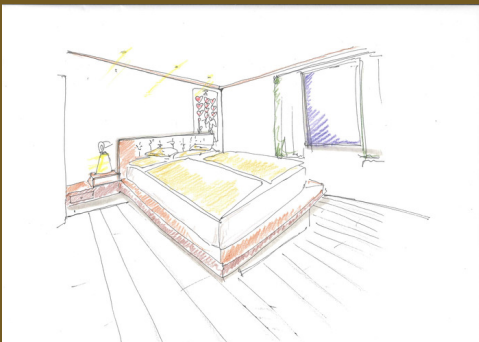
- Shared entertaining area with closed fireplace
- Traditional wooden dining table sitting 8 guests
- Lounge area with generous sofa and TV 48", spectacular views over Boe, Gardena Pass and Cir peaks, access to the sunny balcony
- Kitchen with kitchenette, microwave and fridge with freezer compartment



# family suite

## BEDROOM SECOND FLOOR

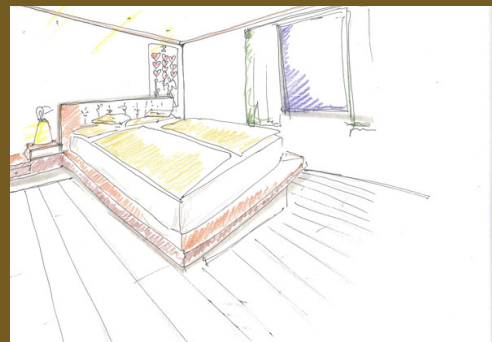
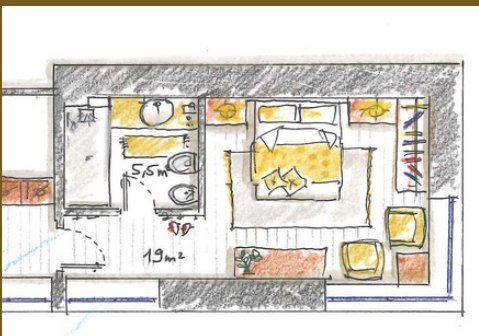
Very spacious double room with ensuite double sink bathroom, shower, bathtub and wc. One window overlooks the inside courtyard while two roof windows enhance the light in the room.



# family suite

## BEDROOM THIRD FLOOR

Double room with ensuite bathroom with shower, sink, wc and a spacious balcony. This room will enchant you with spectacular views over Boe and the Gardena Pass.



# family suite

## CHILDREN'S BEDROOM THIRD FLOOR

The children's bedroom is a world apart! It spreads over 4 different levels and has an ensuite bathroom with shower, sink and wc. All the beds are located on the upper levels and can host up to six children. The colorful and spacious ambiance offers lots of space for playing and entertainment. The different levels are connected by internal stairs, a wooden bridge and a spiral slide.



# family suite

## SERVICES

- Breakfast and dinner at the Hotel
- Access to the ski-room in the Hotel
- Access to the SPA the Wellness-Farm
- Ensuite washing machine
- Ensuite dishwasher
- Furnished kitchenette
- Private balcony



# family suite

## ROOM SIZE OVERVIEW

<b>Size of the different areas</b>	<b>sq m</b>	<b>View</b>
<i>Living room</i>		
Dining table area	17,60	Mountain Boe
Lounge area	15,00	Mountain Boe, Clr
Kitchen area	9,00	Mountain Boe
<i>Room second floor</i>		
Room	22,25	Inside courtyard
Bathroom	8,50	n.a
<i>Room third floor</i>		
Room	18,60	Mountain Boe, Clr
Bathroom	5,15	n.a.
<i>Children's room third floor</i>		
Room level 1	21,00	Inside courtyard
Room level 2	9,30	Inside courtyard
Room level 3	7,20	Inside courtyard
Room level 4	5,25	Inside courtyard
Bathroom	5,34	n.a.
<i>Access area</i>		
Staircase	25,00	